

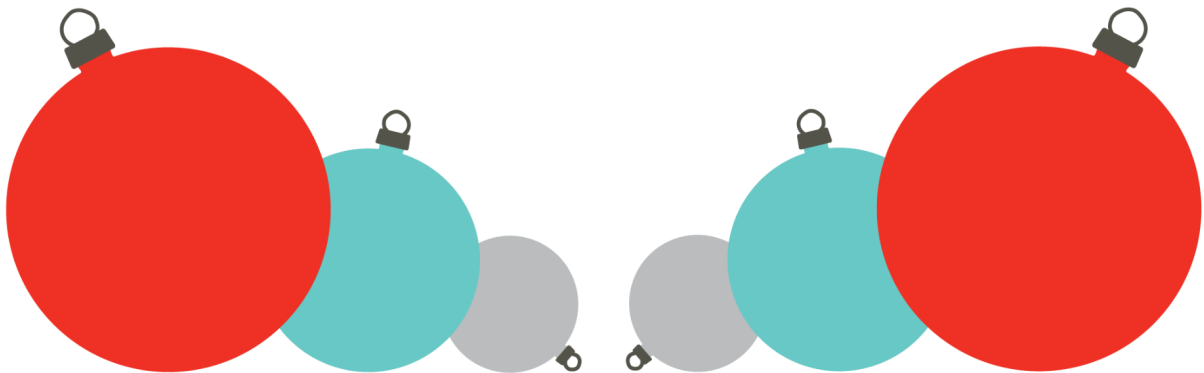


GLASS ART SOCIETY

Holiday

SHOPPING GUIDE

2021



**GAS**GLASS ART
SOCIETY

Holiday Shopping Guide 2021

Section titles below are hyperlinked for easy navigation. Simply click the title of the section you'd like to visit and be taken directly to that page. Alternatively, you can always just scroll down to explore!

STAFF PICKS	3
GIFT IDEAS	5
\$25 and Under	5
\$50 and Under	5
For Style Icons	6
For Cocktail Connoisseurs	7
For Foodies	8
For Nature Lovers	9
For Lifelong Learners	10
For Glassblowers	10
For Collectors	11
BUSINESS LISTINGS + PROFILES	12
Amy Whittingham Glass	13
Carol Milne, knitted glass	14
Decatur Glassblowing	15
Demetra Glass Studios	16
Derel Glass Studio	17
Foci Minnesota Center for Glass Arts	19
Glass Art Society	20
ILLUMINATA ART GLASS DESIGN	21
Jim Moore Tools for Glass	22
Jeremy Sinkus Glass	23
Misodaglass	24
Morgan Gilbreath	25
Paige Lizbeth Morris	26
Prismware, Inc.	27
Salusa Glassworks, Inc.	28
Sonoran Glass School	29
Studio Lasifaasi	30
Two Tone Studios	31
Vitreluxe Glass Works	32

STAFF PICKS

BRANDI P. CLARK
EXECUTIVE DIRECTOR



**Elusive Blue 5-Chain Mooring
Necklace | £330**

This elusive blue cast glass chain with five links(!) is reminiscent of weathered sea glass, tethered rope and rusty chain found along the UK coastline. They are symbolic of the mooring connection between the land and sea.

[BUY NOW](#)

KRISTEN FERGUSON
DEVELOPMENT + MEMBERSHIP MANAGER



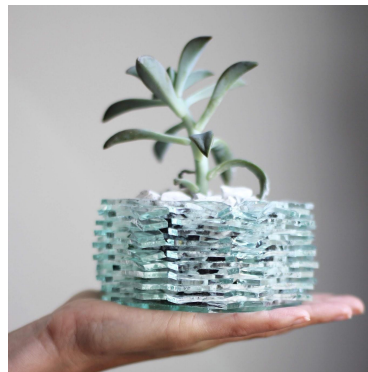
STUDIO LASIFAASI

Kuura | €40

Led candle light Kuura is handmade in Suomenlinna, Helsinki. Light is diffused by a specialty glass-ceramics frit on normal glass, which makes the icy, frost-like rough surface to the object.

[BUY NOW](#)

LAUREN BAYER ECHEVARRIA
COMMS + SOCIAL MEDIA MANAGER



Fused Glass Planter | \$40

Up-Cycled Planter created from hand-cut, stacked, & fused window glass. Flat pieces of glass are given dimension and strength through the repeated layering of patterns and shapes.

[BUY NOW](#)

MAE QUACH
COMMUNICATIONS ASSISTANT



JEREMY SINKUS GLASS

Tourmaline Vase/Shot Glass | \$80

Hard to believe this is not a hollow gem tourmaline crystal. Made of flameworked borosilicate glass in the hydroelectric powered studio of Jeremy Sinkus. 2.25 inches.

[BUY NOW](#)

CYNTHIA PORTER
EVENTS + PROGRAMS MANAGER



ILLUMINATA ART GLASS DESIGN

KEY ORNAMENT | \$50

Simple orbs of transparent glass refract the holiday lights with a key trapped inside.

Send your loved one a gift to show that they have a key to your heart this holiday.

[BUY NOW](#)

OLIVIA CHIARAVALLI
COMMUNICATIONS INTERN



FOCI MINNESOTA CENTER
FOR GLASS ARTS

Pencil Necklaces

by Minori Takagi | \$110

Soft glass and sterling silver.

[BUY NOW](#)

GIFT IDEAS

\$25 and Under



PRISMWARE.NET

LunaBox | \$21.99

The LunaBox transforms glass art into a nightlight with spectacular displays. The LunaBox is available with interchangeable bezels. Pricing decreases with purchase of packages of two or five units.

[BUY NOW](#)



GLASS ART SOCIETY

Unbreakable T-Shirt | \$25

Support GAS in style and show your glass pride! 100% of the proceeds from this shirt go to the GAS Emergency Relief Fund. Choose from two colors: red or grey.

Cotton, pre-shrunk fabric.

[BUY NOW](#)

\$50 and Under



DECATUR GLASSBLOWING

Glass Peach Ornament | \$36

Hanging Flat Glass Peach

[BUY NOW](#)



GLASS ART SOCIETY

GAS Neon Hoodie | \$50

For when you get chilly on a summer evening by the lake, or simply need something comfy to throw on, this lightweight unisex zip hoodie with a modern fit and pockets is the way to go. Runs small. If you have a larger build, we suggest ordering a size up.

[BUY NOW](#)

For Style Icons



STUDIO LASIFAASI

Trio | €39

Unique pair of earrings from blown and then fused glass globes with 925 sterling silver hook. Available in clear and orange-green colors. Made in Helsinki, Finland 2021 by Laura Aalto-Setälä.

[BUY NOW](#)



JEREMY SINKUS GLASS

Nodule Pendant

"Intelligent Shade of Bloo" | \$120

The Nodule design in a pendant form. Composed from the top ten attributes I gathered from ten years of noticing what people enjoy about glass objects into one design. Flameworked borosilicate glass. 1.25" signed, includes black satin cording.

[BUY NOW](#)



AMY WHITTINGHAM GLASS

Elusive Blue

Loop Earrings | £87

These wearable cast glass loops on sterling silver earring wire dangle with a 5cm drop for a simple elegance. Rusty rings and weathered sea glass inspire Amy's 'Mooring' collection of earrings and necklaces.

[BUY NOW](#)



FOCI MINNESOTA CENTER
FOR GLASS ARTS

Clear Droplet Necklace

by Abegael Uffelman | \$350

Flameworked borosilicate glass and sterling silver.

[BUY NOW](#)

For Cocktail Connoisseurs



DEREL GLASS STUDIO

Octopus Decanter | \$400

This decanter is hand engraved with an Octopus on the front panel of a square shaped bottle. The non-lead crystal decanter was hand blown in Europe and holds 28 oz.

[**BUY NOW**](#)



VITRELUX GLASS WORKS

Stump Cups (Twin Pack - Clear) | \$90

The Stump Cup pays respect to the oak aging process of finely crafted whiskeys. We molded this set's unique texture from an oak tree, which was then processed into a bronze blow mold. Limited Availability.

[**BUY NOW**](#)

For Foodies



MORGAN GILBREATH

Cast Glass Salt Cellar | \$60

Minimal, faceted salt cellars created from transparent colored glass. These sleek, tiny vessels can hold salt or spices, but they may also function as a ring holder, spoon rest, etc.

[BUY NOW](#)



TWO TONE STUDIOS

Spiral Covered Dish | \$300

A perfect gift for those who love to bake or aspire to! Imagine these brightly colored domed covered plates for cookies, the perfect cupcake, cheese or fruit. 9"x9"x8". One in stock.

[BUY NOW](#)

For Nature Lovers



DEMETRA GLASS STUDIOS

Golden Nest with Leaves | \$395

Using flameworking techniques, I weave borosilicate glass to form a small nest, and within are nestled tiny glass eggs. The eggs are not attached to the nest, so they can be moved around. Approximately 4" diameter x 2" H

[BUY NOW](#)



PAIGE LIZBETH MORRIS

Blown Glass Vases | \$45-\$150

Various color and size options. Launching Friday!

[BUY NOW](#)



MISODAGLASS

Earthscape Vase | \$155

[BUY NOW](#)

For Lifelong Learners



SALUSA GLASSWORKS, INC.

Contemporary Lampworking Books, 3-Volume Special | \$135

Get all three volumes of Bandhu's groundbreaking, definitive & fun books for a special price available nowhere else. You can ask for an autograph, also available nowhere else! Price incl. Continental US shipping.

[BUY NOW](#)



SONORAN GLASS SCHOOL

Gift Certificates | \$50-\$150

Gift certificates make the perfect gift! They may be applied towards any Sonoran Glass School class, Make-Your-Own Experience, gallery item, or combination thereof.

[BUY NOW](#)

For Glassblowers



JIM MOORE TOOLS FOR GLASS

Standard D2 Diamond Shear | \$200

Made from D2 tool steel which is more abrasion resistant for a longer lasting edge and cleaner cuts. The blades are 1/8" thick; 1/16" thinner than the Standard Diamond Shear.

Blade Length: 4"

[BUY NOW](#)



GAS | GLASS ART SOCIETY

GLASS ART SOCIETY

Individual Membership | \$80

Become a part of the Glass Art Society with a brand new membership. Enjoy all of the benefits of GAS members - and if you purchase during our ONE-DAY-ONLY Cyber Monday Sale, you can get up to 25% off!

[BUY NOW](#)

For Collectors



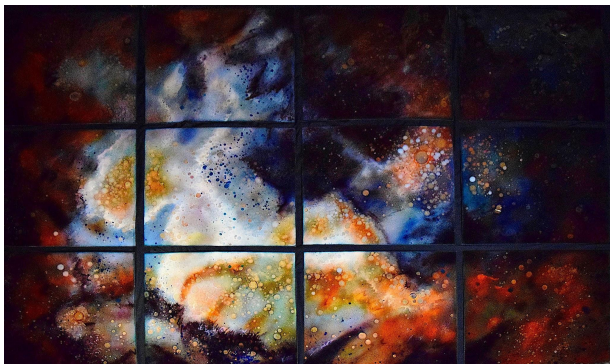
GLASS ART SOCIETY

TACOMA 2022:

Collectors Tour | \$2,096

Includes private visits to homes of local collectors, some truly Northwest experiences, curator-led tours of museum exhibitions, and VIP seating at all conference presentations.

[BUY NOW](#)



FINEFUSIONS.COM

Scintillating New Star,

40" x 66" | \$6,300

Who can resist the majesty and mystery of outer space? Glass kiln fused onto burnished copper captures the myriad colors and depths like no other medium. Each panel measures 12" x 15" with a total of 40" x 66".



CAROL MILNE, KNITTED GLASS

Illuminated Knitted Glass Sculpture

"Gourdgeous Fyra" | \$6,000

An alien, gourd-like/plant-like knitted form with LED lighting snaking around inside. Kiln cast lead crystal, rubber tubing & LED light. 11 x 7 x 7 inches.

[BUY NOW](#)

BUSINESS LISTINGS + PROFILES

Explore below to see what some of our GAS members have to offer this holiday season.

Interested in participating in opportunities like this one?
Become a GAS member today!

We offer a wide variety of unique membership levels with options for students, professionals, businesses, non-profit institutions, and more. No matter your relationship to glass, we have a place for you inside the Glass Art Society. Read below to find out which option best meets your needs.

[Visit glassart.org to learn more!](https://glassart.org)



Amy Whittingham Glass

Independent Artist | amywhittingham.co.uk



**Elusive Blue
Loop Earrings | £87**

These wearable cast glass loops on sterling silver earring wire dangle with a 5cm drop for a simple elegance. Rusty rings and weathered sea glass inspire Amy's 'Mooring' collection of earrings and necklaces.

[BUY NOW](#)



**Elusive Blue 5-Chain Mooring
Necklace | £330**

This elusive blue cast glass chain with five links(!!) is reminiscent of weathered sea glass, tethered rope and rusty chain found along the UK coastline. They are symbolic of the mooring connection between the land and sea.

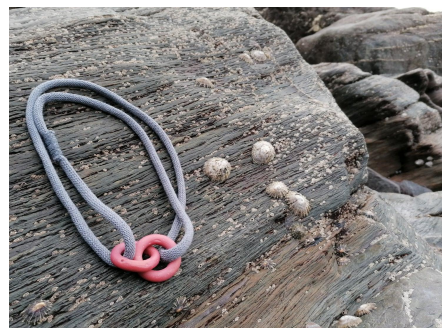
[BUY NOW](#)



**Sunset Triple Chain Mooring
Necklace | £198**

This Sunset cast glass chain with three links is reminiscent of weathered sea glass, tethered rope and rusty chain found along the UK coastline. Sewn and whipped together by hand.

[BUY NOW](#)



**Coral Double Loop Mooring
Necklace | £147**

These two interlinked cast glass loops are reminiscent of rusty rings and weathered sea glass found along the UK coastline. Recycled cotton rope, sewn and whipped together by hand.

[BUY NOW](#)

About Amy Whittingham Glass

Amy Whittingham lives on the South West coast of Devon in the UK. The textural surfaces of rusty rings and weathered rope tethering boats to their dock inspire Amy's range of cast glass chain & rope jewelry. Her 'Mooring' collection of interlinked glass loops are combined with handwoven hemp cord or beautifully soft recycled cotton. For Eco-Friendly statement jewelry connecting the Earth to the Oceans.

Carol Milne, knitted glass

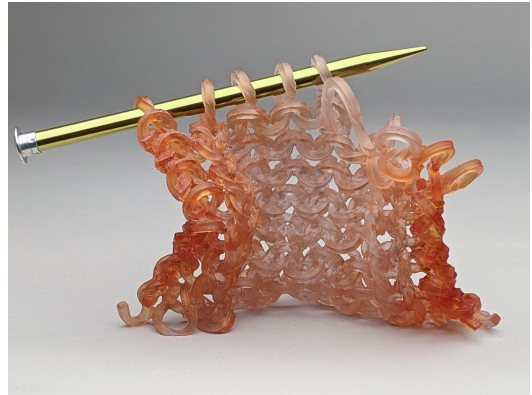
Independent Artist | carolmilne.com



**Entrelac Glass
Necklace | \$225**

Originally designed for the GAS glass fashion show, now available for personal adornment. Strung on a 1.3mm, 18"-long sterling silver wire with a friction clasp. The necklace can be worn vertically or horizontally, your choice.

[BUY NOW](#)



**Knitted Glass Sculpture
"Racer" | \$1,100**

One-of-a-kind knitted glass sculpture. Made of Gaffer Glass, 45% lead crystal, Kiln cast using the lost wax casting process. The central color is Rhubarb, a dichroic glass that is green in fluorescent light and shifts to pinkish in daylight.

[BUY NOW](#)



**Knitted Glass Basket
"Mona" | \$500**

One-of-a-kind knitted glass bowl. Made of Bullseye Glass, Kiln cast using the lost wax casting process. Kiln Cast Lead Crystal. 4.5 x 5.5 x 3.75 inches. Sculpture weight 31oz

[BUY NOW](#)



**Illuminated Knitted Glass Sculpture
"Gourdgeous Fyra" | \$6,000**

An alien, gourd-like/plant-like knitted form with LED lighting snaking around inside. Kiln cast lead crystal, rubber tubing & LED light. 11 x 7 x 7 inches.

[BUY NOW](#)

About Carol Milne

Artist-made, one-of-a-kind, fiber-inspired sculpture immortalized in cast glass.

Decatur Glassblowing

Glassblowing Studio | decaturglassblowing.com



Glass Peach Ornament | \$36

Hanging Flat Glass Peach

[BUY NOW](#)

About Decatur Glassblowing

Hot Shop & Glass Art Gallery in Decatur, GA owned & operated by Nate Nardi.

Demetra Glass Studios

Independent Artist | demetragsstudios.bigcartel.com



Ocean Nest | \$385

Using flameworking techniques, I weave borosilicate glass to form a small nest, and within are nestled tiny glass eggs. The eggs are not attached to the nest, so they can be moved around. Approximately 4" diameter x 2" H

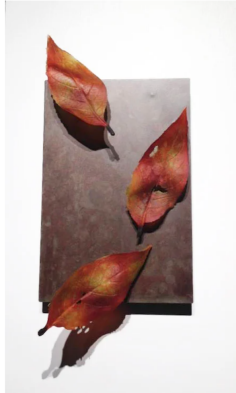
[BUY NOW](#)



Golden Nest with Leaves | \$395

Using flameworking techniques, I weave borosilicate glass to form a small nest, and within are nestled tiny glass eggs. The eggs are not attached to the nest, so they can be moved around. Approximately 4" diameter x 2" H

[BUY NOW](#)



Sunset Leaves | \$1,200

Cast glass leaves created using the ancient technique of pate de verre. Mounted on a hand-forged metal patina canvas, that mounts to the wall with a simple wall bracket

[BUY NOW](#)



Natural Birds Nest | \$385

Using flameworking techniques, I weave borosilicate glass to form a small nest, and within are nestled tiny glass eggs. The eggs are not attached to the nest, so they can be moved around. Approximately 4" diameter x 2" H

[BUY NOW](#)

About Demetra Glass Studios

I am an artist based in San Francisco, California, where I create my work. My glass art is created using two methods: flameworking, melting borosilicate glass at a tabletop torch, and pate de verre, a very detailed method of casting glass.

Derel Glass Studio

Independent Artist | cecilederel.com



Pacific Sea Nettles

Whiskey Decanter & Glasses | \$525

This decanter is hand engraved with three Pacific Sea Nettles swimming around a cylinder bottle. The pair of matching glasses are each engraved with one Pacific Sea Nettle. The non-lead crystal decanter was hand-blown in Europe and holds 28 oz, and the two glasses hold 10 oz each.

[BUY NOW](#)



Octopus Decanter | \$400

This decanter is hand engraved with an Octopus on the front panel of a square-shaped bottle. The non-lead crystal decanter was hand-blown in Europe and holds 28 oz.

[BUY NOW](#)



Bottlenose Dolphin | \$325

This free-standing optical glass sculpture is hand engraved with a Bottlenose Dolphin. The sculpture is 6" diameter and 1 1/4" thick.

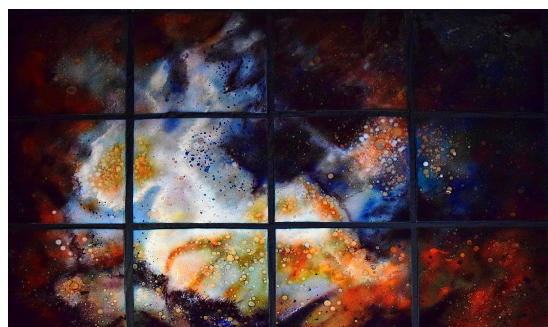
[BUY NOW](#)

About Derel Glass Studio

I am a glass engraver using the drill technique for engraving. I draw inspiration for my work from nature and I love depicting plants, animals, and sea life.

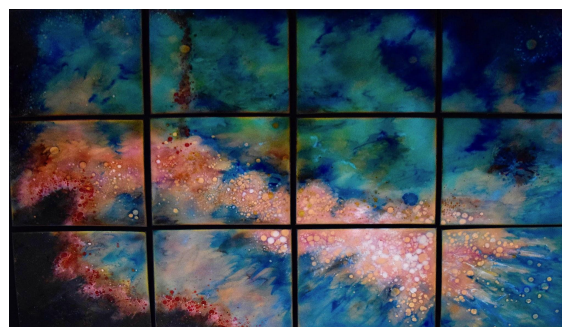
finefusions.com

Independent Artist | finefusions.com



**Scintillating New Star,
40" x 66" | \$6,300**

Who can resist the majesty and mystery of outer space? Glass kiln fused onto burnished copper captures the myriad colors and depths like no other medium. Each panel measures 12" x 15" with a total of 40" x 66".



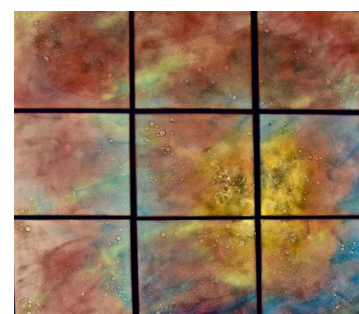
**New Star in Twelve
Panels | \$6,300**

Who can resist the majesty and mystery of outer space? Glass kiln fused onto burnished copper captures the myriad colors and depths like no other medium. Each panel measures 12" x 15" with a total of 40" x 66".



**Summer Sky in
Twelve Panels | \$5,100**

Sparkling skies of Summertime. Glass on copper. Each panel measures 10" x 12"; 40" x 36" total.



**Rain in
Nine Panels | \$4,725**

The Rain is clearing and the sun is beginning to shine through the clouds. Fresh air and fresh ideas and outlook!

BUY NOW: www.finefusions.com | 520-219-8777 | clmtucson@comcast.net

About finefusions.com

Glass on copper wall installations. Since moving to Tucson, AZ in 2000 I have been pursuing my passion, creating installations for residential, commercial, educational, and health locations. Glass on copper panels sparkle in direct light, colors will never fade, and will even flourish outdoors. My work has been featured at SOFA Chicago, Art Palm Beach, the Hamptons, Museum of Contemporary Art, Mesa, AZ, San Salvador American Embassy.

Foci Minnesota Center for Glass Arts

Arts Organization | mnglassart.org



Clear Droplet Necklace
by Abegael Uffelman | \$350

Flameworked borosilicate glass
and sterling silver.

[BUY NOW](#)



Building Bracelets
by Najah Alboushi | \$140

Flameworked borosilicate glass
and sterling silver.

[BUY NOW](#)



Jumble Necklaces - Ultra Lit
by SaraBeth Post | \$350

Flameworked borosilicate glass
and blackened steel.

[BUY NOW](#)



Pencil Necklaces
by Minori Takagi | \$110

Soft glass and sterling silver.

[BUY NOW](#)

About Foci Minnesota Center for Glass Arts

Established in 2009, Foci MCGA (Minnesota Center for Glass Arts) proudly represents a vibrant arts community as Minnesota's only non-profit public access glass studio & education center. Our 501(c)(3) non-profit organization is located in Minneapolis & offers a full glass studio curriculum taught by artists locally and nationally recognized, as well as programming for youth, events, & retail and exhibition galleries.

Glass Art Society

Arts Organization | glassart.org



Unbreakable T-Shirt | \$25

Support GAS in style and show your glass pride! 100% of the proceeds from this shirt go to the GAS Emergency Relief Fund. Choose from two colors: red or grey. Cotton, pre-shrunk fabric.

[BUY NOW](#)



Individual Membership | \$80

Become a part of the Glass Art Society with a brand new membership. Enjoy all of the benefits of GAS members - and if you purchase during our ONE-DAY-ONLY Cyber Monday Sale, you can get up to 25% off!

[BUY NOW](#)



GAS Neon Hoodie | \$50

For when you get chilly on a summer evening by the lake, or simply need something comfy to throw on, this lightweight unisex zip hoodie with a modern fit and pockets is the way to go. Runs small. If you have a larger build, we suggest ordering a size up.

[BUY NOW](#)



TACOMA 2022:

Collectors Tour | \$2,096

Includes private visits to homes of local collectors, some truly Northwest experiences, curator-led tours of museum exhibitions, and VIP seating at all conference presentations.

[BUY NOW](#)

About Glass Art Society

We are the Glass Art Society—a 501c3, non-profit, international organization—with the mission to connect, inspire, and empower all facets of the global glass community. Our long-term vision is to create one unified glass community.

ILLUMINATA ART GLASS DESIGN

Glassblowing Studio | Independent Artist | illuminataglass.com



ARGENTO RECYCLED GLASSWARE | \$69

Stemless glassware made from RECYCLED GLASS at a RENEWABLE FUELS FURNACE powered by vegetable oil, embedded with silver leaf. Toast the Earth and your friends with these hearty glasses are made for wine but are often used as cocktails. DISHWASHER safe.

[BUY NOW](#)



ARGENTO RECYCLED GLASSWARE (SET of 6) | \$348

Stemless glassware made from RECYCLED GLASS at a RENEWABLE FUELS FURNACE powered by vegetable oil, embedded with silver leaf. Toast the Earth and your friends with these hearty glasses are made for wine but are often used as cocktails. DISHWASHER safe.

[BUY NOW](#)



KEY ORNAMENT | \$50

Simple orbs of transparent glass refract the holiday lights with a key trapped inside. Send your loved one a gift to show that they have a key to your heart this holiday.

[BUY NOW](#)



URCHIN ORNAMENT | \$90

Colored spiky little gems for the tree. Send your loved one a gift to show that they have a key to your heart this holiday.

[BUY NOW](#)

About ILLUMINATA ART GLASS DESIGN

Julie Conway is the owner of ILLUMINATA ART GLASS DESIGN LLC, a custom lighting and glassworks studio in Seattle WA. Julie has 24+ years of experience creating and installing illuminated glassworks for public space, hospitality projects, and luxury residential locations. A founding member of BioGlass.org focused on eco-efficient glassmaking, Julie now offers recycled glass products in her ready-made series the LUMi Collection.

Jim Moore Tools for Glass

Tools + Supplies | toolsforglass.com



Cup Jacks (8") | \$300

Similar in appearance to a small Standard Jack, but with a different blade profile. Somewhat more utilitarian than the Goblet Jack, but still a specialized tool intended for people who spend a lot of time shaping cups

[BUY NOW](#)



Standard D2 Diamond Shear | \$200

Made from D2 tool steel which is more abrasion resistant for a longer-lasting edge and cleaner cuts. The blades are 1/8" thick; 1/16" thinner than the Standard Diamond Shear.

Blade Length: 4"

[BUY NOW](#)



Large Waffle Crimp | \$170

Makes a very convincing 16th-century waffle texture over a small area. If old-world patterns are your thing, the Waffle Crimp is your tool. 10 1/2" handle. Available in Coarse (3/16" x 1-3/16" x 2-3/8") or Fine (1/8" x 1" x 2")

[BUY NOW](#)



Bent Puffers | \$105-\$120

Working without the luxury of an assistant? Get a bent puffer and take matters into your own hands. While they look odd, bent puffs make it possible to blow your own while working at the bench.

Available in Small, Medium, Large, and Jumbo.

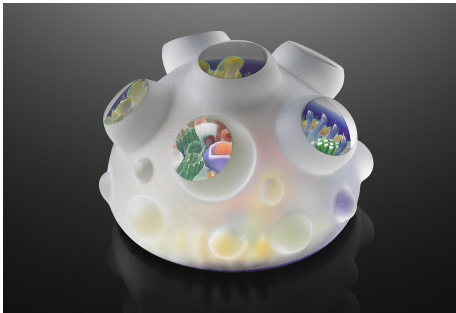
[BUY NOW](#)

About Jim Moore Tools for Glass

Jim Moore has been handcrafting fine glassblowing tools since 1983. Made in our backyard, on the Olympic Peninsula, and shipped globally from our dining room table, we supply hot glass professionals, students, and studios with the hand tools they need to make their vision a reality. We offer over 100 different tools for the glass artist.

Jeremy Sinkus Glass

Independent Artist | jeremysinkus.com



Coralite "Nodule" | \$350

Composed from the top ten attributes I gathered from ten years of noticing what people enjoy about glass objects into one design. #1 is Windows. Can you guess them all? Made of flameworked borosilicate glass. 3 inches.

Signed & dated.

[BUY NOW](#)



Nodule Pendant

"Intelligent Shade of Bloo" | \$120

The Nodule design in a pendant form. Composed from the top ten attributes I gathered from ten years of noticing what people enjoy about glass objects into one design. Flameworked borosilicate glass.

1.25" signed, includes black satin cording.

[BUY NOW](#)



Tourmaline Bud Vase/Shot Glass | \$80

Hard to believe this is not a hollow gem tourmaline crystal. Made of flameworked borosilicate glass in the hydroelectric powered studio of Jeremy Sinkus. 2.25 inches.

[BUY NOW](#)



Golden Ticket "Nodule" | \$400

Nodule with windows revealing an illuminated bliss. Coated in 22K gold. Made of flameworked borosilicate glass. 3 inches. Signed.

[BUY NOW](#)

About Jeremy Sinkus Glass

Geological and subterranean designs in glass. Glass is the human expression of a geological process. 20 years of handmade glass art in my hydroelectric-powered studio in western Massachusetts. Flameworked, kiln cast, and subtraction techniques.

Misodaglass

Independent Artist | melissamisoda.com



Earthscape Vase | \$155

[BUY NOW](#)



Sunrise Bowl | \$155

[BUY NOW](#)



Earthscape Vessel | \$155

[BUY NOW](#)



About Misodaglass
Colorful blown glass vessels

Morgan Gilbreath

Independent Artist | morgangilbreath.com

MORGAN
GILBREATH
STUDIO



Cast Glass Salt Cellar | \$60

Minimal, faceted salt cellars created from transparent colored glass. These sleek, tiny vessels can hold salt or spices, but they may also function as a ring holder, spoon rest, etc.

[BUY NOW](#)



Cast Glass Catch-All Dish | \$126

Minimal, faceted catch-all dish made from transparent colored glass. Each catch-all is kiln-cast, faceted, carved, and ground to a smooth, satin finish. Perfect for jewelry, keys, or treasures.

[BUY NOW](#)



Recycled Glass Multicolored Catch-All Dish | \$110

Minimal, faceted dish cast from multicolored chunks of glass recycled from past glass castings. Each sustainably-made casting is entirely one-of-a-kind. Two colorway options.

[BUY NOW](#)



Fused Glass Planter | \$40

Up-Cycled Planter created from hand-cut, stacked, & fused window glass. Flat pieces of glass are given dimension and strength through the repeated layering of patterns and shapes.

[BUY NOW](#)

About Morgan Gilbreath

I strive to make minimal, thoughtful, and sustainably-crafted design that exists in the service of a joyful contemporary life. Beginning in 2019, these cast glass vessels are sustainably created to enshrine the everyday. Through modular, versatile, and scalable casting systems, this work cherishes and honors every small particle of this world, both in the production process and in the various functions of the resulting vessels.

Paige Lizbeth Morris

Independent Artist | paigelizbethmorris.com



Blown Glass Vases | \$45-\$150

Various color and size options. Launching Friday!

[BUY NOW](#)



Pillow Talk | \$45

Collage on paper, unframed, 7.5" x 9", 2021

[BUY NOW](#)



Angel Food Cake | \$45

Collage on paper, unframed, 9" x 12", 2021

[BUY NOW](#)

About Paige Lizbeth Morris

Paige Lizbeth Morris (she/her; b. 1990, Allentown, PA) is an interdisciplinary artist with a foundation in glass. She received her MFA from Virginia Commonwealth University in 2020 + her BFA from Tyler School of Art + Architecture in 2012. Morris has exhibited work internationally in New York, Pennsylvania, Virginia, Texas, Washington, and Tipperary, Ireland. She has shared her research at SECAC, Critical Craft Forum, and GAS. Morris's work is included in New Glass Review #34, #41. She is a member of the Burnt Asphalt Family and sits on the Glass Art Society Board of Directors as the Student Representative.

Prismware, Inc.

Tool & Display Manufacturer | prismware.net



Light Up Your Holidays



**Turn Your Marble Into A
Brilliant Night Light**
Prismware.net



Prismware LunaBox



Standard Bezels

- 25mm, 35mm Sphere
- 25mm, 35mm Geode
- Custom bezels are possible



LunaBox | \$21.99

The LunaBox transforms glass art into a nightlight with spectacular displays. The LunaBox is available with interchangeable bezels. Pricing decreases with the purchase of packages of two or five units. Contact swortley@prismware.net for information on pricing for 20 or more units or for the possibility of custom bezels.

[BUY NOW](http://prismware.net)

About Prismware, Inc.

Prismware provides an independent faceting arm and tools to the glass art community. Recently it added a nightlight that can display a wide variety of glass objects to its list of products.

Salusa Glassworks, Inc.

Independent Artist | salusaglassworks.com



House Ornaments | \$145

These make lovely window decorations any time of year but are especially popular for Christmas. About 12.5" tall, they are too large for most trees, but look great singly or massed in dramatic groupings around the house. No two are exactly alike. Price includes shipping within the Continental US.

[BUY NOW](#)



Contemporary Lampworking Books, 3-Volume Special | \$135

Get all three volumes of Bandhu's groundbreaking, definitive and fun books for a special price available nowhere else. You can even ask for an autograph, also available nowhere else! Price includes shipping within the Continental US.

[BUY NOW](#)



Tree of Life Chanukah Menorah | \$375

Distinctive Chanukah Menorahs available in a variety of color styles. Available year-round. Price includes shipping within the Continental US.

[SOLD OUT for 2021](#)



Bandhu's Patreon, Highly Evolved Being Level | \$20/month

Support the arts—in particular, this artist— while receiving access to exclusive videos and behind-the-scenes peeks at the artist's life. Several levels of participation available. See link for info!

[BUY NOW](#)

About Salusa Glassworks, Inc.

Salusa Glassworks is the studio of artist, educator, and author Bandhu Scott Dunham. Bandhu creates unusual kinetic glass sculptures and abstract forms; he also publishes the definitive instructional books on lampwork glassblowing. Bandhu supervises apprentices in the production of collectible gift items (also unique!) and teaches classes at studios and craft schools around the world.

Sonoran Glass School

Glass School | Retail | sonoranglass.org



Gift Certificates | \$50-\$150

Gift certificates make the perfect gift! They may be applied towards any Sonoran Glass School class, Make-Your-Own Experience, gallery item, or combination thereof.

[BUY NOW](#)

About Sonoran Glass School

Sonoran Glass School (SGS) is a nonprofit educational organization dedicated to inspiring people of all ages to discover the wonder of glass art. As the only full-service, nonprofit glass arts educational facility in the Southwest, the school promotes the creation and appreciation of glass as a visual arts medium through educational courses, one-on-one experiences, visiting artist workshops, and community events.

Studio Lasifaasi

Glass Design Studio | lasifaasi.fi/shop



Trio | €39

Unique pair of earrings from blown and then fused glass globes with 925 sterling silver hook. Available in clear and orange-green colors. Made in Helsinki, Finland 2021 by Laura Aalto-Setälä.

[BUY NOW](#)



Komi Necklace | €59

The recycled, trashed glass ('komi' in Finnish) has been given a new life as a piece of jewelry. Unique piece of jewelry with recycled glass and sterling silver. Handmade in Helsinki, Finland.

Chain (40cm) sterling silver; glass pieces cold-attached. Total length 46cm.

[BUY NOW](#)

Kuura | €40

Led candle light Kuura is handmade in Suomenlinna, Helsinki. Light is diffused by a specialty glass-ceramics frit on normal glass, which makes the icy, frost-like rough surface to the object.

[BUY NOW](#)



About Studio Lasifaasi

Glass design studio from Helsinki Finland. Awarded unique lighting, jewelry, and interior items made from glass. All items are unique or small-scale production, all handmade in Finland.

Two Tone Studios

Glassblowing Studio | twotonestudios.com

Two Tone Studios

contemporary glass design



Tall Spiral Cups | \$60

Our Spiral Cups are made of clear glass with a fine line of color fused onto the surface.

Available in high and low ball, for your cocktail pleasure! Available in 8 colors.

[BUY NOW](#)



Spiral Covered Dish | \$300

A perfect gift for those who love to bake or aspire to! Imagine these brightly colored domed covered plates for cookies, the perfect cupcake, cheese, or fruit. 9"x9"x8". One in stock.

[BUY NOW](#)



Spiral Pitcher | \$165

Spiral Pitchers are made of clear glass with a fine line of color fused onto the surface.

Perfect for mixing cocktails!

Order with cups to match, or on its own.

[BUY NOW](#)



Polka Dot Dessert Stand | \$400

Imagine a cupcake for a special someone or a stack of chocolates when entertaining. These cheerful colors will bring a smile to anyone's face with or without a sweet something.

[BUY NOW](#)

About Two Tone Studios

Two Tone Studios creates contemporary designed hand-blown glass objects with a nod to the past. Each unique design is handcrafted by husband and wife team Boyd Sugiki and Lisa Zerkowitz, who met as graduate students at the Rhode Island School of Design. The work they create includes decorative objects and tabletop items such as drinkware, bowls, vases, cake stands, and covered dishes.

Vitrelux Glass Works

Glassblowing Studio | vitreluxe.com



Crystal Cup | \$45-\$54

The Crystal Tumblers are amazing for both texture and function. Inspired by quartz crystal's random facets & surface texture. Each cup is handmade and offered in 9 color variations. Lead time is about 2 weeks to make the cups and get them shipped out.

[BUY NOW](#)



Sitka Vases | \$88

The Sitka Vase is inspired by the repeated patterns and strict order of parallel lines that exist in the needles of its namesake tree, the Sitka Spruce. Made to order. Please expect 2-4 weeks for delivery.

[BUY NOW](#)



Stump Cups (Twin Pack - Clear) | \$90

The Stump Cup pays respect to the oak aging process of finely crafted whiskeys. We molded this set's unique texture from an oak tree, which was then processed into a bronze blow mold.

Limited Availability.

[BUY NOW](#)



Calyx Vase (Midnight) | \$180

This new product is a blend of aesthetics and function. The namesake given for the protective veil of a flower just before budding. The form offers a supportive architecture to allow for larger bouquets while offering easy access to wash the inside. Limited Availability.

[BUY NOW](#)

About Vitreluxe Glass Works

Vitrelox Glass Works was founded by Lynn in 1999 with the desire to build an advanced glass studio with some unique alterations to allow for versatility, creativity, and efficiency. The name Vitreluxe was derived from two words: vitreous, the brilliant luster of glass, and deluxe, the mid-century benchmark of quality. Since the studio's first spark ignited, Vitreluxe has grown into a maker's mark of superior quality.